

Subject: How to change the Video Stream to H.264

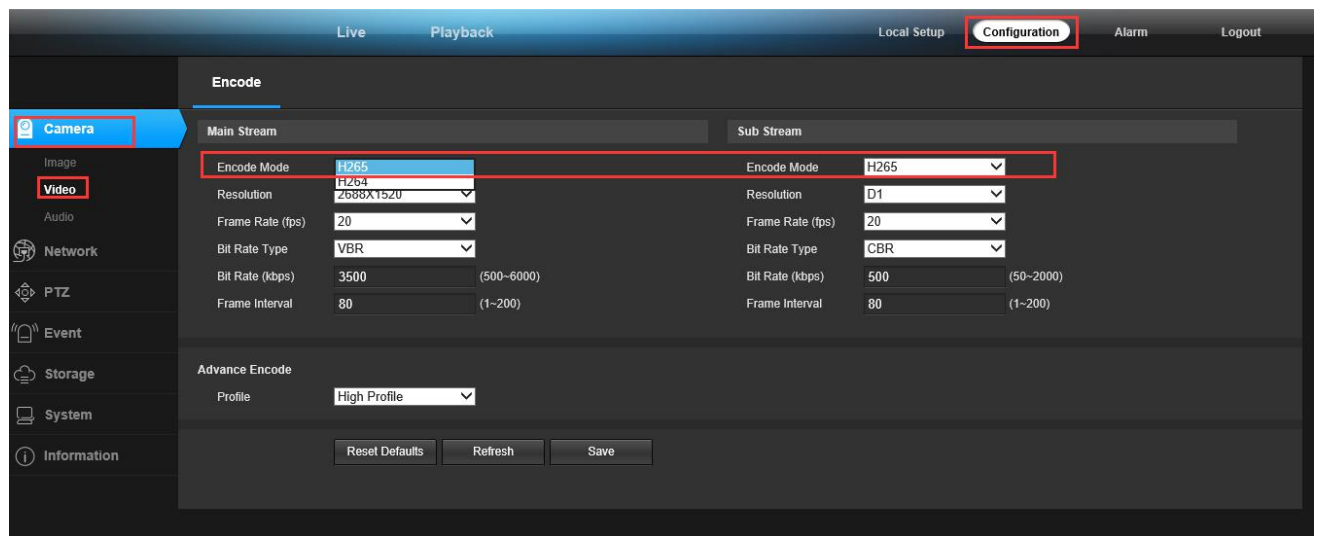
Written by: Anpviz Products Care Team

Dated: 2018-06-10

How to change the Video Stream to H.264

The camera's default video stream is H.265 (advanced video compression technology) , the NVR will not display the image if your NVR does not support H.265, the NVR will notice unsupported video stream.

Please login the web page at first, if you don't know how to login, please refer to the file " how to login the web page"



Configuration->camera->video, change the H.265 to H.264