

Subject: How to Add Cameras on NVR

Written by: Anpviz Products Care Team

Dated: 2018-06-10

How to Add Cameras on NVR

1. Check the IP address of every port of your NVR



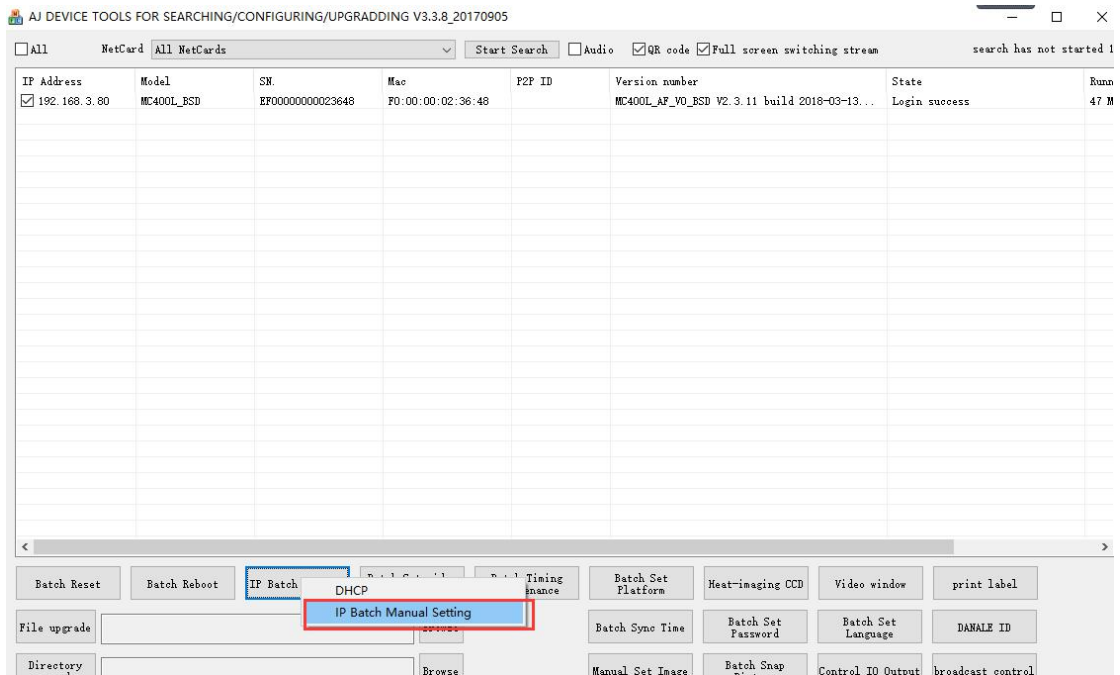
For example, I'd like to plug the camera in the D1 port, its ip address is 192.168.254.6, remember this ip

2. Modify ip address manually

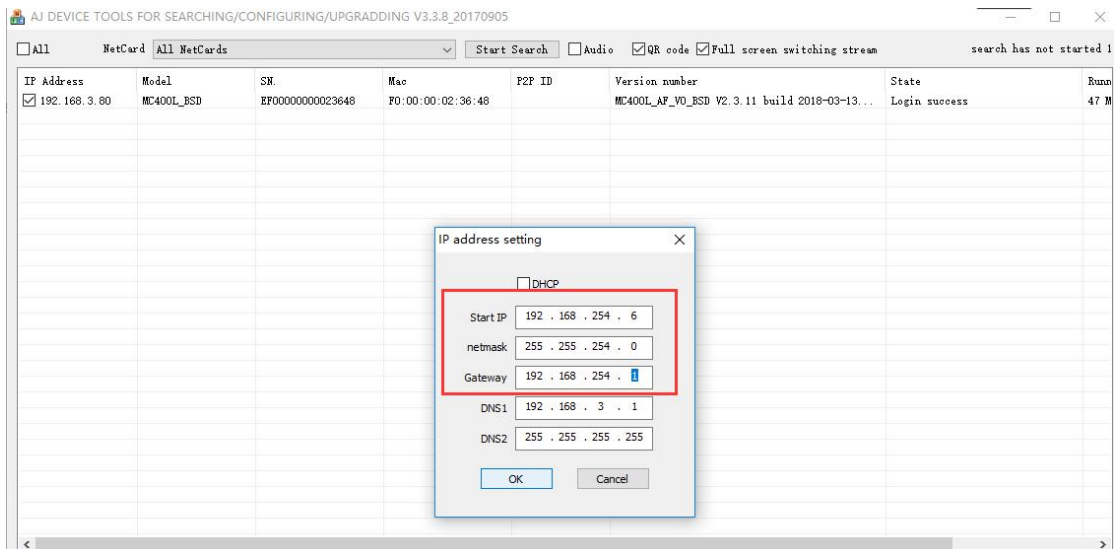
Plug in the device to an outlet and connect the camera to your **router** through

Ethernet.

Open the IP detection Tool, please refer to file 1. "how to login web page" if you don't how to run the IP tool



Check the check box, click IP Batch Setting-> IP Batch Manual Setting



Do you still remember the ip address of the D1 port? it is 192.168.254.6

So i modify the ip address of the PTZ camera to 192.168.254.6

IP address : 192.168.254.6

Subnet mask: 255.255.254.0

Gateway: 192.168.254.1

3. Connect camera to the NVR

Now everything is ready, please plug off the power adapter and router, than connect the PTZ to your NVR (You need to plug in power adapter if your NVR does not support PoE function).

If the cameras pan and tilt automatically, that means the camera are running normally.



If the image shows unsupported video stream, please change the video stream to H.264.

You can refer to the file 2."how to change video stream to H.264"

