

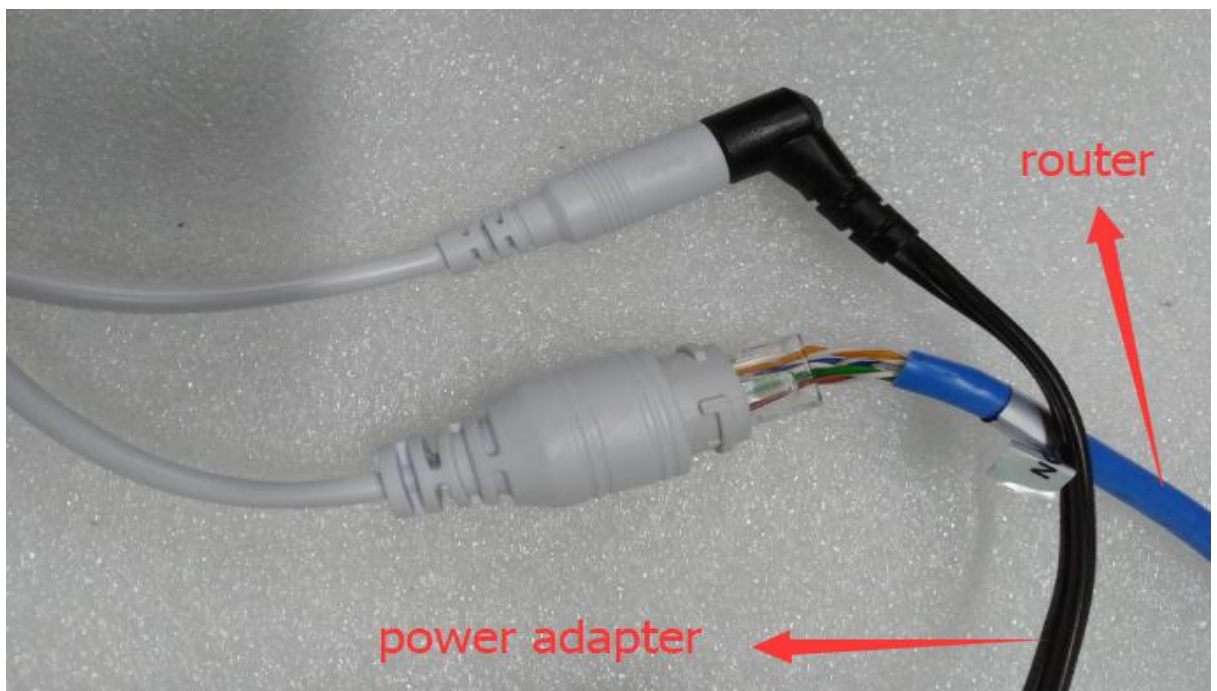
Subject: Troubleshoot for Anpviz PTZ IP Dome Camera

Written by: Anpviz Products Care Team

Dated: 2018-06-10

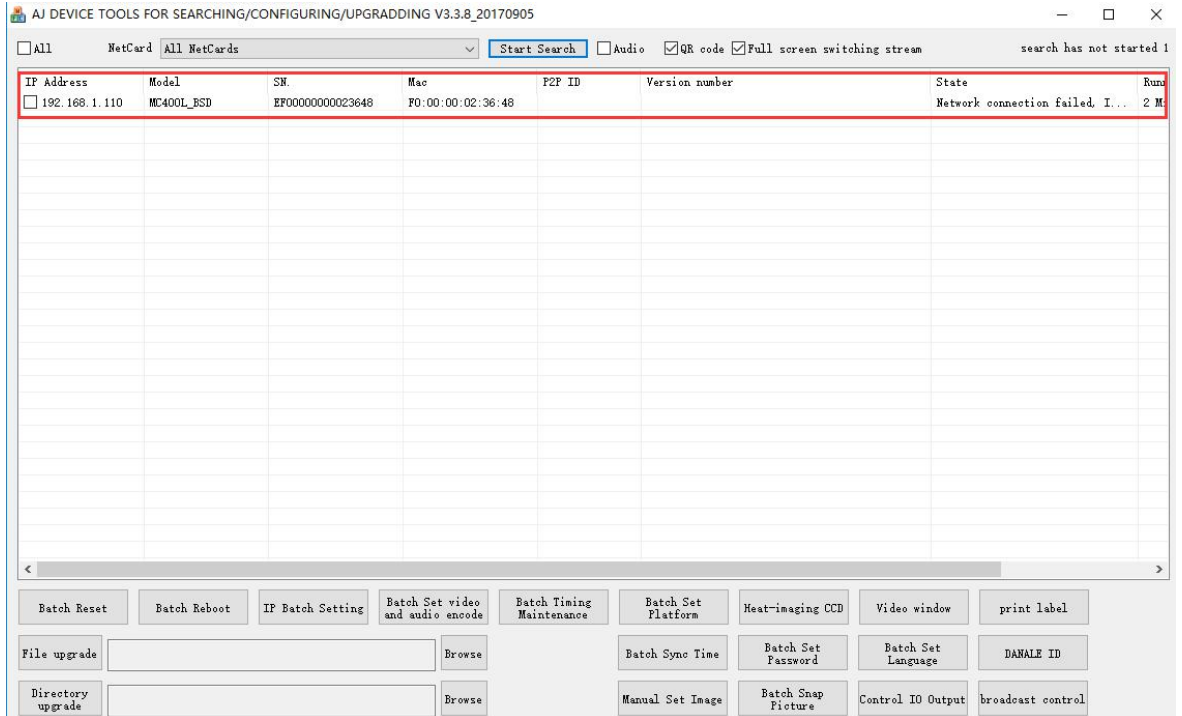
## How to Login in the Web Page

1. Please plug in the device to an outlet and connect the camera to your **router** through Ethernet. The camera will pan and tilt automatically, that means the camera is running normally.

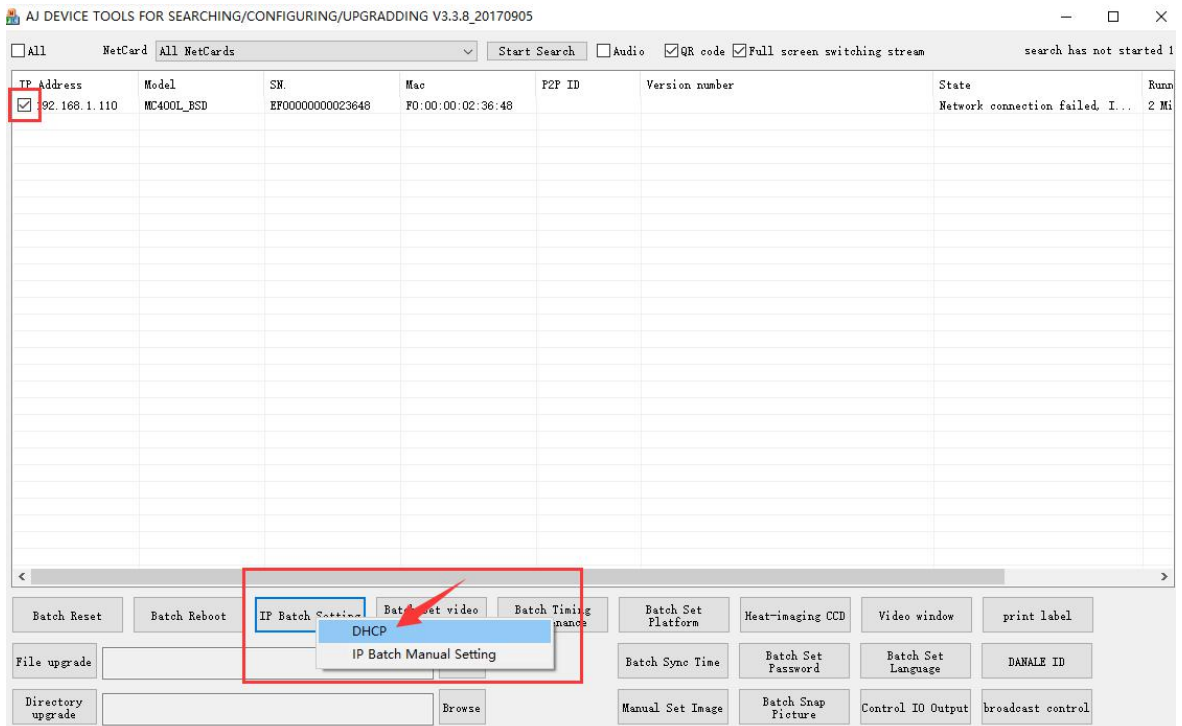


2. Download the IP detection Tool and install it. You can download it from the disk in the box or from our website: [http://www.anpvizsecurity.com/download/anpviz-ptz\\_c0007](http://www.anpvizsecurity.com/download/anpviz-ptz_c0007)

Install the software and open it, the information of the camera will be displayed in the software



### 3. Enable DHCP or modify ip address manually



Check the check box, click IP Batch Setting->DHCP, The ip address of your camera will be change to the same network segment with your router

AJ DEVICE TOOLS FOR SEARCHING/CONFIGURING/UPGRADING V3.3.8\_20170905

All NetCard All NetCards   Audio  QR code  Full screen switching stream search has not started 1

IP Address	Model	SN	Mac	P2P ID	Version number	State	Runn
<input type="checkbox"/> 192.168.3.80	MC400L_BSD	EF00000000023648	F0:00:00:02:36:48		MC400L_AF_V0_BSD V2.3.11 build 2018-03-13...	Login success	47 M

The ip address automatically modified to 192.168.3.80 after i enable the DHCP,because my router's ip address is 192.168.3.1

#### 4. Login the web page

Open the IE browser, put in the ip address 192.168.3.80 in the browser bar

http://192.168.3.80/

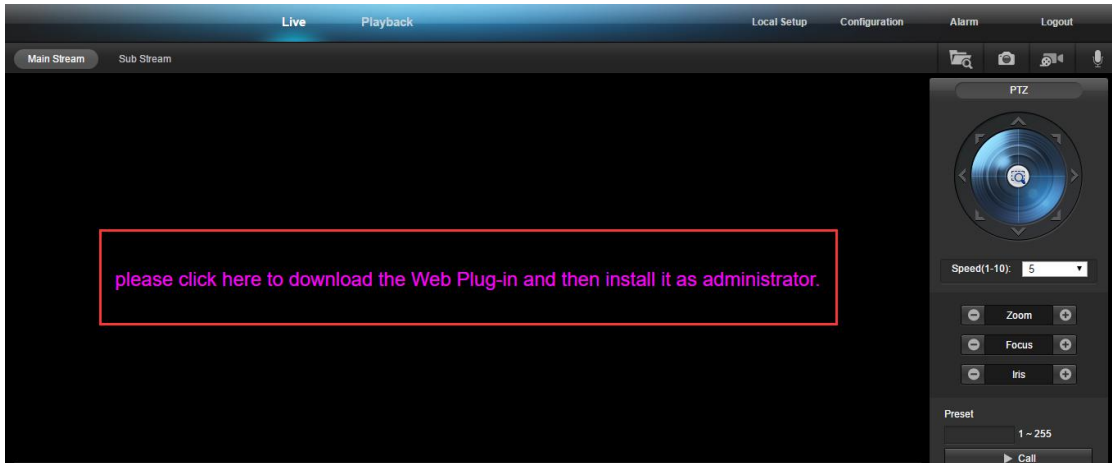
Login

文件(F) 编辑(E) 查看(V) 收藏夹(A) 工具(T) 帮助(H)

**IP Camera Web Login**

Language: English

username:admin  
password:123456



Download the web Plug-in and then install it as administrator

